

Knowledge Organiser

Spring Term Set 2

Year 10



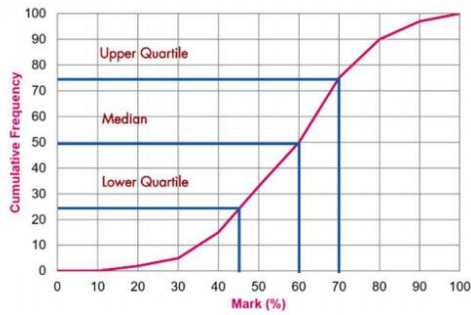
Topic	Self-Assessment	Independent Learning and homework tasks	
		MyMaths	CorbettMaths.com
Representing data in frequency polygons		Data, Processing Data, Stem & Leaf	Video 155 & 156
Calculating averages from a (grouped) frequency table		Data, Processing Data, Mean from Grouped Data 1	Video 54 & 55
Calculating moving averages		Statistics, Processing Data, Time Series	
Constructing cumulative frequency tables and graphs		Data, Presenting Data, Cumulative Frequency 1	Video 153 & 154
Calculating the median and interquartile range		Data, Presenting Data, Cumulative Frequency 2	
Constructing box and whisker plots		Data, Presenting Data, Box and Whisker Plots	Video 149 & 150
Drawing scatter graphs and identifying types of correlation		Data, Presenting Data, Scatter Graphs	Video 165 & 166
Calculations involving speed, distance and time (3)		N/A	Video 299
Drawing and interpreting distance time & velocity time		Algebra, Graphs - Distance Time Graphs, Velocity Time Graphs	Video 171
Write very large numbers & small numbers in standard form		Number, Standard Form - Standard Form Large & Small	Video 300
Be able to calculate using standard form		Number, Standard Form - Standard Form Calcs	Video 301 - 303
Finding and calculating with lower and upper bounds		Number, Estimating & Accuracy, Upper & Lower Bounds 1 & 2	Video 183 - 184
Calculate lengths of arcs & areas of sectors		Shape, Area & Perimeter - Arcs, Sectors, Segments	Video 58, 63

Stretch and Challenge:

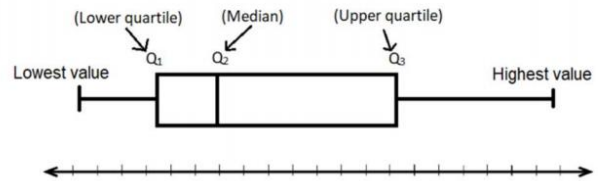
- 1) Practise UKMT Intermediate Maths Challenge Past papers on:
<https://www.ukmt.org.uk/competitions/solo/intermediate-mathematical-challenge/archive>
- 2) Set up an account on parallel.org.uk website, using your school email address and use teacher code "ha52kh"
- 3) Attend Puzzle Club one lunch time each week

Lent Term Knowledge

Cumulative
Frequency
Curve

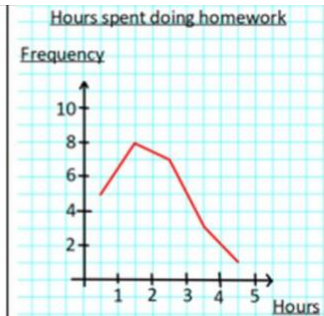


Box Plots



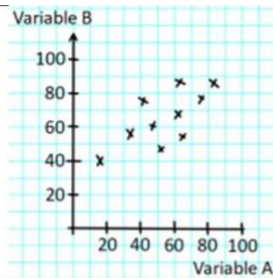
Frequency polygon

A line replaces the bars joining the midpoint of the top of each bar.



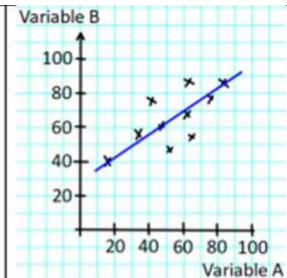
Scatter graph

Plots two variables against one another



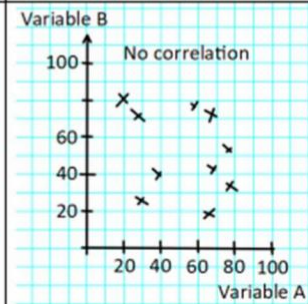
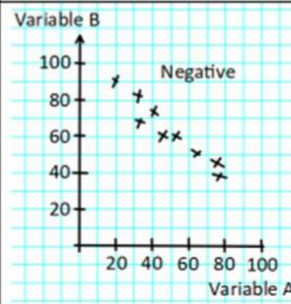
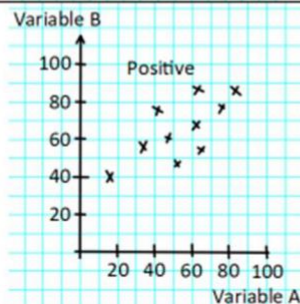
Lines of best fit

A line is drawn through the points on a scatter graph. It attempts to represent the relationship between the two variables



Correlation

How two variables are related either positive, negative or no correlation.



Standard form

A number can be written in standard form. This means it is a multiplier of a power of 10 e.g. $34000 = 3.4 \times 10^4$ and $0.00034 :$

Scan QR Code for Full List of Maths Facts

