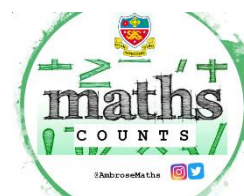


## Knowledge Organiser

Spring Term Set 3c

Year 10



Topic	Self-Assessment	Independent Learning and homework tasks	
		MyMaths	CorbettMaths.com
Using the unitary method to solve problems involving proportion (4)		GCSE 1-9, Ratio & Proportion - Proportion, Best Buy & Unitary	Video 269, 271a - d, 255a
Being able to share an amount in a given ratio (4)		GCSE 1-9, Ratio & Proportion - Ratio, Ratio Dividing 1 & 2	Video 269, 271a - d, 255a
Representing data in frequency polygons (4)		Data, Processing Data, Stem & Leaf	Video 155 & 156
Calculating averages from a (grouped) frequency table (4/5)		Data, Processing Data, Mean from Grouped Data 1	Video 54 & 55
Calculating moving averages (6)		Statistics, Processing Data, Time Series	
Constructing cumulative frequency tables and graphs (6)		Data, Presenting Data, Cumulative Frequency 1	Video 153 & 154
Drawing scatter graphs and identifying types of correlation (3)		Data, Presenting Data, Scatter Graphs	Video 165
Drawing and using lines of best fit (4)		Data, Presenting Data, Line of Best Fit	Video 166
Transformations; reflection, rotation, translation (3/4)		Shape, Transformations, .....	Video 272 - 275, 326
Enlarge shapes using positive and negative scales factors (5/6)		Shape, Transformations, Enlarging Shapes	Video 104 - 109
Representing 3D solids in two dimensions (3)		Shape, 2S & 3D Shapes - Nets of 3D Shapes & Plans Elevations	
Calculations involving speed, distance and time (3)		N/A	Video 299
Drawing and interpreting distance time & velocity time (6/7)		Algebra, Graphs - Distance Time Graphs, Velocity Time Graphs	Video 171

### **Stretch and Challenge:**

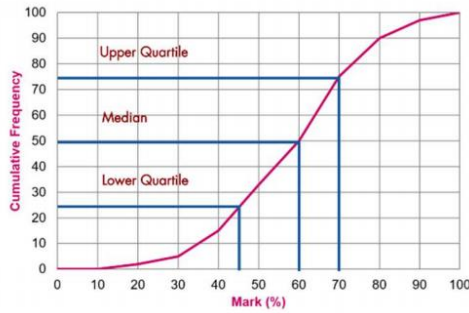
Set up an account on [parallel.org.uk](http://parallel.org.uk) website, using your school email address and use teacher code "ha52kh"

### **Support:**

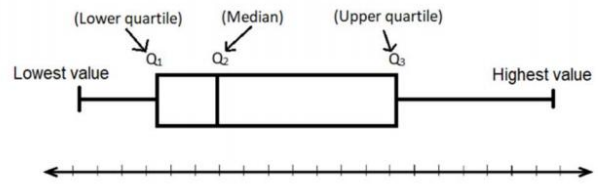
Attend Maths Clinic one lunch time each week

## Lent Term Knowledge

Cumulative  
Frequency  
Curve

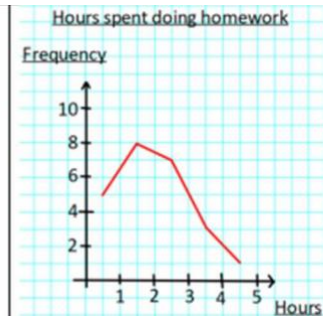


Box Plots



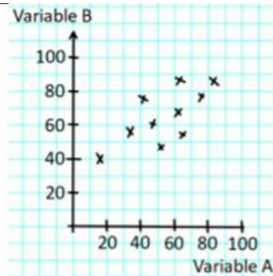
Frequency polygon

A line replaces the bars joining the midpoint of the top of each bar.



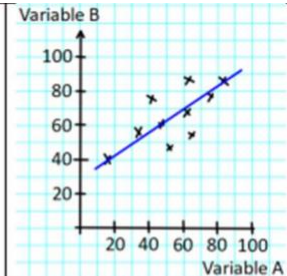
Scatter graph

Plots two variables against one another



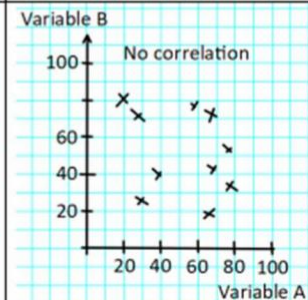
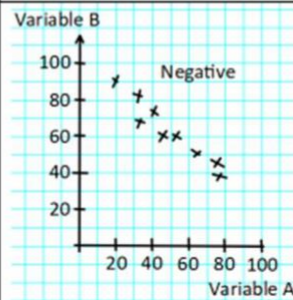
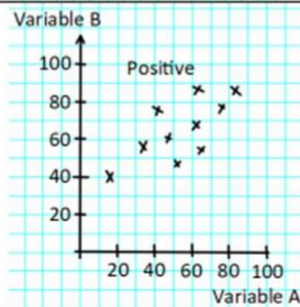
Lines of best fit

A line is drawn through the points on a scatter graph. It attempts to represent the relationship between the two variables



Correlation

How two variables are related either positive, negative or no correlation.



Scan QR Code for Full List of Maths Facts

