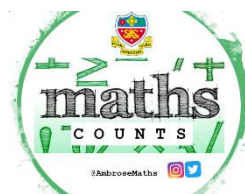


## Knowledge Organiser

Spring Term Set 3

Year 10



| Topic   | Self-Assessment | Independent Learning and homework tasks                      |                  |
|---|-----------------|--|------------------|
|   |                 | MyMaths  | CorbettMaths.com |
| Representing data in frequency polygons (4)                     |                 | Data, Processing Data, Stem & Leaf                           | Video 155 & 156  |
| Calculating averages from a (grouped) frequency table (4/5)     |                 | Data, Processing Data, Mean from Grouped Data 1              | Video 54 & 55    |
| Calculating moving averages (6)                                 |                 | Statistics, Processing Data, Time Series                     |                  |
| Constructing cumulative frequency tables and graphs (6)         |                 | Data, Presenting Data, Cumulative Frequency 1                | Video 153 & 154  |
| Calculating the median and interquartile range (6)              |                 | Data, Presenting Data, Cumulative Frequency 2                |                  |
| Constructing box and whisker plots (6)                          |                 | Data, Presenting Data, Box and Whisker Plots                 | Video 149 & 150  |
| Drawing scatter graphs and identifying types of correlation (4) |                 | Data, Presenting Data, Scatter Graphs                        | Video 165 & 166  |
| Calculations involving speed, distance and time (3)             |                 | N/A  | Video 299        |
| Drawing and interpreting distance time & velocity time (6/7)    |                 | Algebra, Graphs - Distance Time Graphs, Velocity Time Graphs | Video 171        |
| Write very large numbers & small numbers in standard form (4)   |                 | Number, Standard Form - Standard Form Large & Small          | Video 300        |
| Be able to calculate using standard form (5)                    |                 | Number, Standard Form - Standard Form Calcs                  | Video 301 - 303  |
| Finding and calculating with lower and upper bounds (5/7)       |                 | Number, Estimating & Accuracy, Upper & Lower Bounds 1 & 2    | Video 183 - 184  |

### **Stretch and Challenge:**

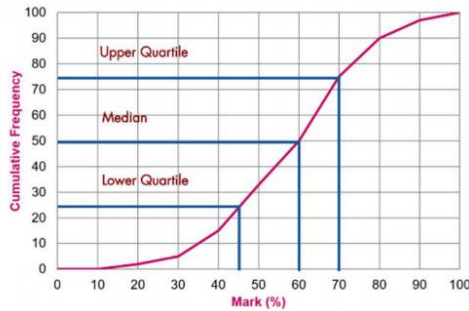
Set up an account on [parallel.org.uk](http://parallel.org.uk) website, using your school email address and use teacher code "ha52kh"

### **Support:**

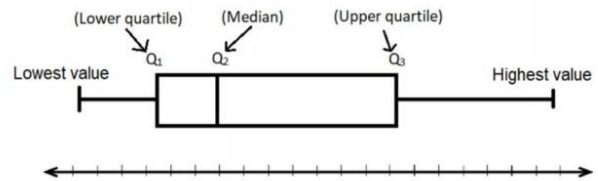
Attend Maths Clinic one lunch time each week

## Lent Term Knowledge

Cumulative  
Frequency  
Curve

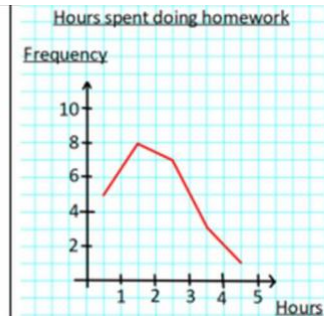


Box Plots



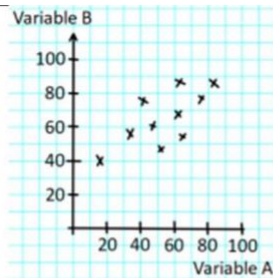
Frequency polygon

A line replaces the bars joining the midpoint of the top of each bar.



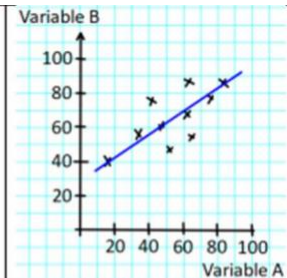
Scatter graph

Plots two variables against one another



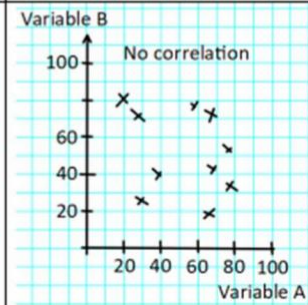
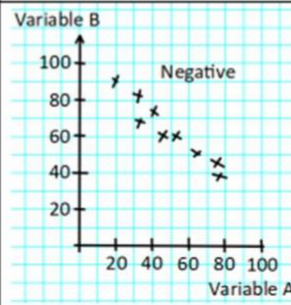
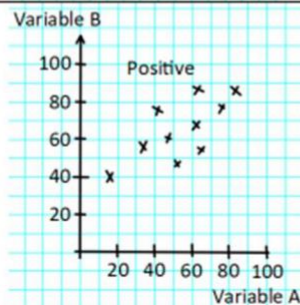
Lines of best fit

A line is drawn through the points on a scatter graph. It attempts to represent the relationship between the two variables



Correlation

How two variables are related either positive, negative or no correlation.



Standard form

A number can be written in standard form. This means it is rewritten to be a number between 1 and 10 and has a multiplier of a power of 10 e.g.  $34000 = 3.4 \times 10^4$  and  $0.00034 = 3.4 \times 10^{-4}$

Scan QR Code for Full List of Maths Facts

