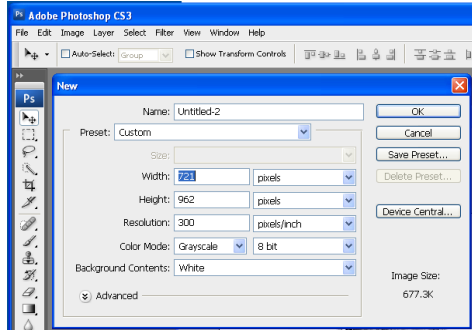


# Year 7 Photoshop Knowledge Organiser

## Opening a Photoshop file

Open Adobe Photoshop CS3. A box will appear that looks like this....



Choose a **Name** for your work, then change the **Preset** to "International Paper" then select your preferred size – A5, A4 etc.

## Saving your work

Saving in Photoshop format (**.psd**) will retain layers, type, and other editable Photoshop properties. It's best to save your image in PSD format while you're still working on it.

Select: **File > Save**

Saving in **JPEG** (.jpg) format will save as a standard image file that can be shared, opened by other programs due to its smaller file size. Saving your design as a JPEG (.jpg) will flatten layers.

Select: **File > Save As** then

select '**JPEG**' from the format drop down box.

When you're finished editing, save a copy in both of these formats.

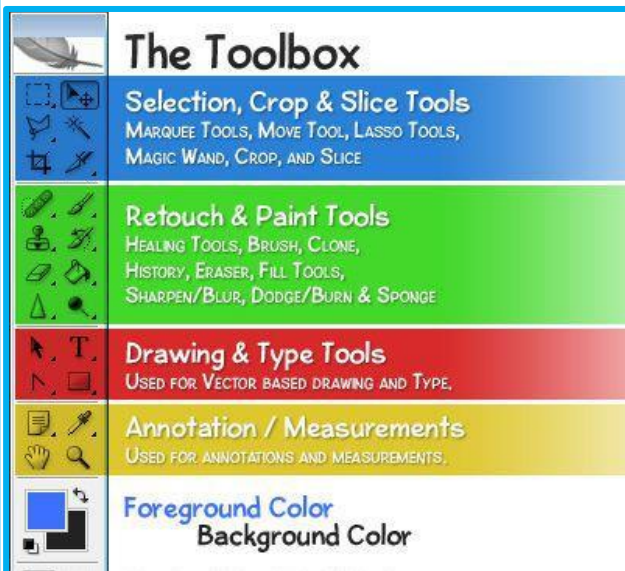
## Made a mistake?

- To **undo** the last thing you did, choose Edit > Undo
- To **redo** the last thing you did, choose Edit > Redo
- To undo multiple steps select a step in the **History** panel.

## Transform

The Free **Transform** command (**Ctrl T**) lets you apply transformations in one continuous operation.

- Scale
- Rotate
- Skew / Distort
- Perspective
- Warp



Keyboard shortcuts:  
**Ctrl T** Free Transform  
**Ctrl +** Zoom in  
**Ctrl -** Zoom out  
**Ctrl C** Copy

Keyboard shortcuts:  
**Ctrl V** Paste  
**Ctrl O** Open  
**Ctrl** New file  
**Ctrl J** New layer  
 (via copy)

